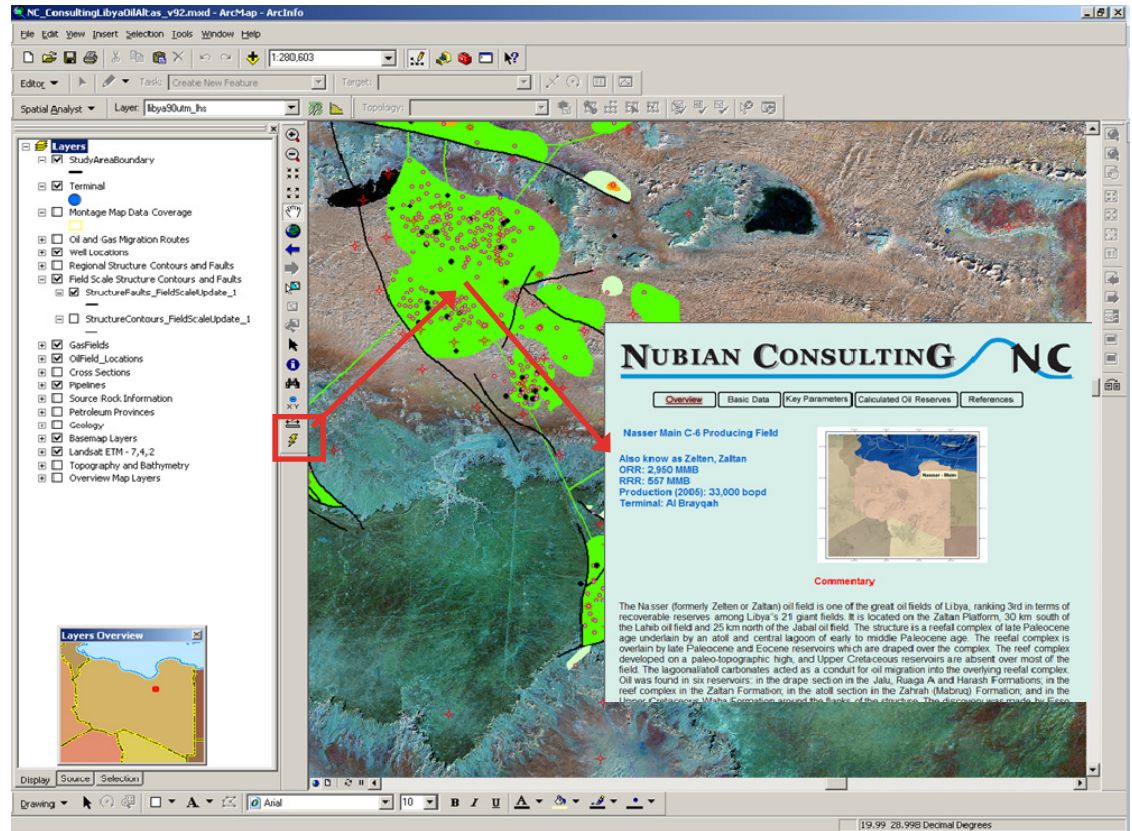


PRODUCT DESCRIPTION

The Digital Atlas is a GIS (ArcGIS) product built around an interface map of Libya showing every oil and gas field and discovery in the country, onshore and offshore; these are located in 14 defined petroleum provinces with data linked to each individual field.

DATABASE STATISTICS

- Over 400 oil and gas fields representing more than 500 separate pools (producing, non-producing and historical)
- More than 7,800 well locations are plotted
- ~20,000 text data entries for hyperlinked information
- ~22,000 database entries
- More than 30 cross sections mapped and hyperlinked



The Atlas is aimed primarily at IOCs seeking development and production opportunities in Libya, including companies that already have interests in the country, but is also of great analogue-value to IOCs with exploration activity. No other report provides such a comprehensive and detailed review of Libyan oil and gas fields and their future potential. Given the importance of Libyan petroleum production at a time of uncertainty about international supply, this product will be of great interest not only to oil companies but also to consultants, investment analysts and oil service companies.

Digital Atlas Data Layers

For each field

- Depth map with posted values at the main reservoir horizon
- Hyperlinked sheets with:
 - Description of the geology and history of discovery and appraisal
 - In the case of fields on production: description of history of development, depletion and any EOR techniques employed
 - Pipeline and terminal utilised
 - Key scientific references for each field

By exclusive arrangement with:

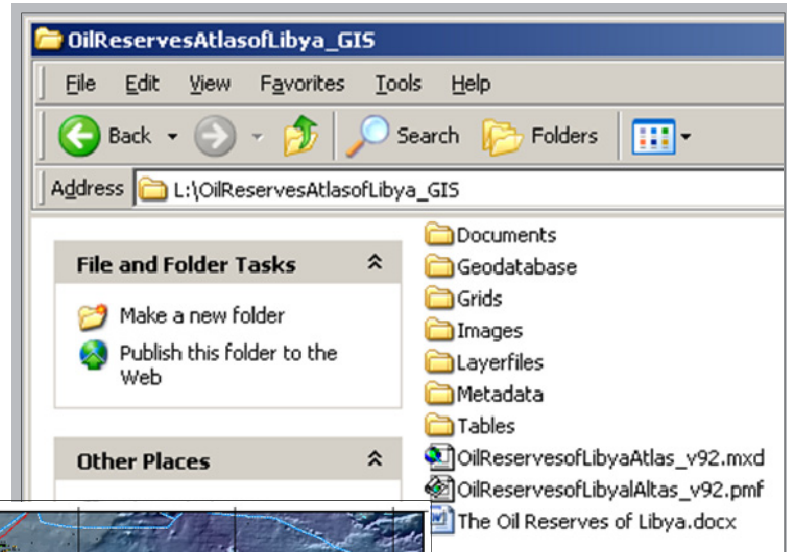
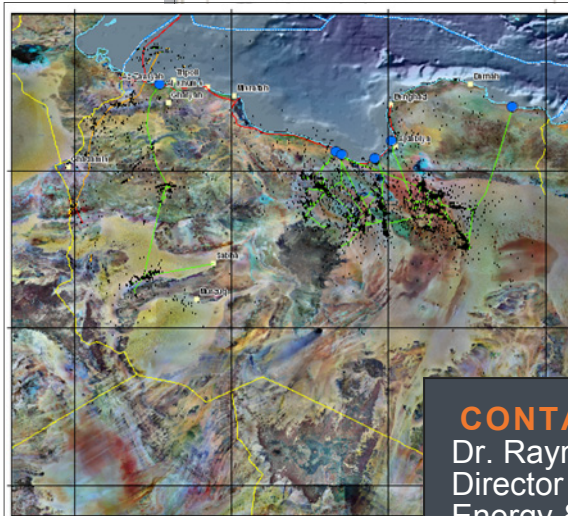


For each pool /reservoir

- Key parameters including oil characteristics
- Area of pool
- Subsurface petrophysical parameters
- STOOIP, conventionally recoverable reserves and estimated EOR increment
- For fields on production, each pool has STOOIP, produced reserves and estimate of remaining recoverable reserves including EOR increment
- Hyperlink to cross section through or near to the field showing details of the petroleum system including migration pathways
- Hyperlink to montage of the relevant petroleum province with geological setting information including stratigraphy and details of reservoir facies and paleogeography (column, map and/or cross section)

The interface map displays the following information

- Petroleum provinces
- Surface geology
- Landsat imagery
- All exploration, appraisal and development wells included with status
- Depth structure mapping at reservoir level for each province
- Pipelines and terminals with pipeline diameter, capacity and throughput
- Source kitchens with data on source rock thickness, maturity and migration pathways
- Location of regional cross sections with hyperlink to each cross section



CONTACT INFORMATION

Dr. Raymond A. Levey
 Director
 Energy & Geoscience Institute
 University of Utah
 423 Wakara Way, Suite 300
 Salt Lake City, UT 84108
 (801) 581-5126
 rlevey@egi.utah.edu

LICENSE FEES

Initial License:

£90,000 (UK)

Annual Maintenance:

£10,000 (UK)

The GIS provides powerful search and display capabilities e.g.

- Fields with producing reservoir depth > or < than 'x'
- Pools with oil quality and GOR > or < than 'x'
- Pools with reservoir lithology and age of type 'x'
- Pools with reservoir porosity > or < than 'x'
- Fields with same reservoir
- Undeveloped fields with greater than 'x' mmbbls remaining recoverable reserves in any province
- Fields discovered by original operator 'x'
- Fields discovered by current operator 'x'